



PATSY MILLER: A CHAMPION FOR A CLEANER LILYDALE

Lilydale resident Patsy Miller is a dedicated walker with a passion for keeping her community clean. She combines her love for walking with her commitment to environmental care by picking up litter during her daily walks. Equipped with a water bottle, litter gripper, trash bags, sanitizer, and an iPhone playing 60s and 70s tunes, Patsy covers significant stretches of Lilydale's June Mullarky Trail, from Highway 13 to Wachtler Avenue, or as far west as Lucky 13 in Mendota.

Patsy's inspiration comes from her brother, Doug, who has been active in Plymouth's clean-up efforts for years. After retiring, Patsy wanted to stay fit and give back to her community. By turning her walks into litter-picking sessions, she has participated in many local clean-up events, including Dakota County's

spring and fall efforts. She even dedicates her winter walks in Bonita Springs, Florida, to the same cause. Patsy encourages others to join her in this important work! She suggests teaming up with a friend, neighbor, or family member to help sort and recycle the trash. It's a great way to spend time together while making a meaningful difference in the community.

If you'd like to get involved, trash bags and litter grippers are available at City Hall. Patsy hopes residents will "adopt" sections of Highway 13, ensuring Lilydale remains beautiful and green. Her efforts have already made a significant impact, and she's excited to see more people pitch in.

For more information on environmental conservation, visit earthday.org.

CITY COUNCIL

Lyle Hanzal, Mayor
Jay Budge
Deborah Cornell
Mary Kleinberg
Bill Kleinman

City council meetings are held the second Monday of every month at 4:30 p.m. at city hall.

PLANNING COMMISSION

Bart Schneider, Chairperson
Jim Kleinberg
Tim Rourke
Julie Seykora
Tom Sutton

Planning commission meetings are held the third Monday of every month at 4:30 p.m. at city hall.

LILYDALE CITY HALL

1011 Sibley Memorial Hwy. Lilydale, MN 55118
Phone: 651-457-2316
Hours: M-F 9 a.m. - 4:30 p.m.
Email: cityoflilydale@comcast.net

BUILDING PERMITS & INSPECTIONS

Call SAFEbuilt at 952-442-7520

Newsletter designed by valeriesands.com

REDUCE/REUSE LEARN TO FIX AND MEND AT A FREE FIX-IT CLINIC

Instead of trashing broken household items, bring them to a Dakota County Fix-It Clinic for free fixing or mending. Last year, Fix-It Clinics helped Dakota County residents save nearly 4,000 pounds of items from the landfill. These clinics are held monthly at rotating locations and are run by skilled volunteers who love to lend a hand. You'll learn how to troubleshoot and tinker, and hopefully fix your items onsite or at home.

In addition to keeping useful items out of the landfill, these events bring people together and empower you to fix things on your own.

Show up to the upcoming Fix-It Clinic on April 26 from 11 a.m. to 2 p.m. at Kaposia Library, 131 Seventh Ave. N., South St. Paul. The event is free, and you do not need to register to participate.



Bring up to three items that need fixing or mending. The most common items people bring are lamps, vacuums and clothes for mending. You must be able to carry items into the clinic, so no overly large items.

For future dates and more information, visit www.dakotacounty.us, search fix-it clinic.

Partially funded by Dakota County and the Minnesota Pollution Control Agency.



Spring 2025

City Newsletter

LILYDALE HISTORY COMMITTEE COMMEMORATES THE 1965 FLOOD

On April 7, 1965, the small community of Lower Lilydale was devastated by the surging Mississippi River, forcing the 150 residents to evacuate. The flood caused catastrophic damage, leaving more than half of the homes destroyed or severely impacted. While some families never returned, others found a way to adapt—living in trailers that could be



FIGURE 9.—Many homes in Lilydale, Minn., were damaged beyond repair. Photograph by Minneapolis Star and Tribune, Minneapolis, Minn.

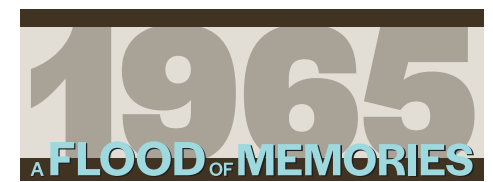
moved to higher ground during future floods. The resilience of this community in the face of such adversity is a testament to their strength and spirit.

To honor this pivotal moment in our history, the Lilydale History Committee invites you to join us for a special gathering on **Saturday,**

May 3, from 1 to 3 p.m. at Lilydale City Hall.

We'll come together to commemorate the 1965 flood and reflect on the experiences of those who lived through it.

Local historian Dave Bryne will share insights into life in Lower Lilydale before it became Lilydale Regional Park. You'll have the chance



to relive memories of Sunday drives through the area, exploring backyard caves, and ice skating on Pickerel Lake. The event will also feature rare footage and powerful photographs from the flood itself.

We invite former residents of Lower Lilydale to bring their personal stories and photos to share. You can also post them on the Lilydale Minnesota History Facebook page.

This event offers a unique opportunity to reconnect, reminisce, and honor the enduring spirit of the community. **We hope to see you there!**

VOLUNTEER OPPORTUNITY

A resident of Lilydale is needed to serve on the Northern Dakota County Cable Communications Commission ("NDC4"), which provides:

- Consumer protection services for cable subscribers
- Local government programming on non-commercial cable, online, and social media
- Oversight of local community and educational programming and public access services through the non-profit corporation Town Square Television



Commissioners are asked to:

- Attend NDC4 meetings generally held at 7 p.m. the first Wednesday of every other month (February, April, June, August, October, and December) at the Town Square Television facility in Inver Grove Heights
- Stay up-to-date on NDC4 activities by reading NDC4 meeting packets and staff emails
- Attend occasional events
- Support the mission of NDC4 and Town Square Television
- Representatives also serve as direct liaisons between NDC4 and the city and should keep their city informed of NDC4 activities.

For more information call or email Mary Tollefson at Lilydale City Hall 651-457-2316, cityoflilydale@comcast.net

COMMUNITY CLEAN-UP

Join your community for a day of fun. Let's make a difference together by collecting trash and preserving our parks and river!

Kick Off Location and Pick Up Supplies:

Lilydale Pool & Yacht Club
1600 Lilydale Road

April 26, 2025, 10 a.m.

For more information and to register, scan QR code, visit bit.ly/lilydalecleanup2025

Or contact Mary at City Hall, 651-457-2316, cityoflilydale@comcast.net



Music & Refreshments at Noon!



FOLLOW YOUR RECYCLING

If you follow your recycling in Dakota County, you won't have to go very far. The materials are sorted by people and machines at local recycling facilities and sent to different companies that turn them into new products. Many of these companies are based right here in Minnesota, turning recyclables into new cracker and cereal boxes, durable decking and fencing, food and beverage bottles and more. To keep this process running smoothly, it is important to put the right items in your home recycling.



Put these items loose in your home recycling (no plastic bags):

Paper

- Newspaper and inserts
- Magazines and catalogs
- Mail and office papers

Cardboard

- Corrugated cardboard
- Paperboard (e.g., cracker boxes)

Cartons

- Milk and juice cartons
- Soup, broth and wine cartons
- Juice boxes
- Metal cans
- Aluminum, tin and steel cans
- Glass bottles and jars

Plastic bottles, containers and jugs

- Containers numbered 1, 2 or 5
- Soda, juice and water bottles
- Milk and juice jugs
- Margarine, cottage cheese and other tubs and lids
- Laundry detergent bottles and jugs
- Clear berry and produce containers

Make sure bottles, jars and containers are empty and dry before recycling. They don't have to be perfect — just free of most residue like food and liquids. Leave caps on containers and flatten boxes. Leave out plastic bags, batteries, black plastic, food and things that can tangle around moving machines. If you're wondering about a specific item, use the online Recycling Guide at www.dakotacounty.us, search recycling guide.

Partially funded by Dakota County and the Minnesota Pollution Control Agency.

ILLICIT DISCHARGE—WHAT IT IS AND WHAT YOU CAN DO TO HELP

Illicit discharge is the disposal or discharge of pollutants and non-storm water materials into a storm sewer system via surface flow, direct dumping into the storm sewer or water body, or through illegal connections to the storm sewer system.

Storm drains and ditches are only designed to convey stormwater runoff, and there is no treatment facility between the street and the end destination—a lake, stream or wetland.

If you see spills or illegal dumping, we want to hear about it. If there is an immediate threat to human health or safety, call 911. For non-emergencies during regular business hours, call Lilydale city hall at 651-457-2316 or email cityoflilydale@comcast.net.

Types of illicit discharges

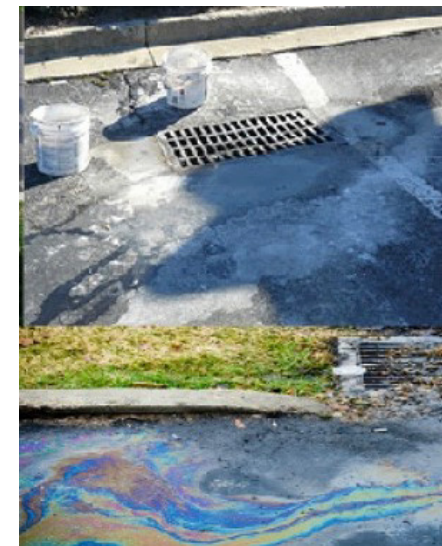
- Improper disposal of auto and household chemicals
- Spills from roadway accidents or vehicle leaks
- Improper disposal of yard and pet wastes
- Construction site sediment
- Drilling operation waste
- Laundry and car wash water
- Septic tank discharge and sanitary wastewater
- Chlorinated pool water

What to look for

- Persons dumping liquids, animal waste, leaves, grass clippings, or anything unidentifiable into a storm drain
- Unusual colors or odors in the surface water
- Stains, unusual odors, or structural damage to street surfaces
- Dead or distressed fish, plants, or other wildlife near surface water
- Abnormal vegetative growth in water bodies
- Sediment accumulation in water bodies
- Pipes with flowing water during a dry period

Acceptable discharges

- Clean water discharges including water line flushing
- Air conditioning condensation
- Irrigation water, sump pump and lawn watering discharge
- Individual residential car wash water
- De-chlorinated swimming pool water
- Discharges or flow from firefighting and other activities necessary to protect public health and safety.
- Normal rainfall



Please recycle this newsletter after use.

LOCAL UPCOMING EVENTS

Shred Event



Saturday, April 12
9 a.m. – Noon

West St. Paul Sports Complex
1650 Oakdale Ave., West St. Paul

lilydale.govoffice.com, search shred

Mattress Collection



Saturday, May 21
9 a.m. – Noon

West St. Paul Public Works
403 Marie Ave. E., est St. Paul

lilydale.govoffice.com, search mattress

Officer Scott Patrick 5k



Saturday, June 7
9 a.m.

Village at Mendota Heights
Intersection of Main and Market Streets

lilydale.govoffice.com, search 5k