



City Newsletter • Summer 2024

**LILYDALE CITY HALL**

1011 Sibley Memorial Hwy.  
Lilydale, MN 55118  
Phone: 651-457-2316  
Hours: M-F 9:00 a.m. - 4:30 p.m.  
Email: cityoflilydale@comcast.net

**CITY COUNCIL**

John Diehl, Mayor  
Deborah Cornell  
Lyle Hanzal  
Mary Kleinberg  
Bill Kleinman

*City council meetings are held the second Monday of every month at 4:30 p.m. at city hall.*

**PLANNING COMMISSION**

Bart Schneider, Chairperson  
Brian Folkman  
Lyle Hanzal  
Yvette Mullen  
Julie Seykora  
Tom Sutton

*Planning commission meetings are held the third Monday of every month at 4:30 p.m. at city hall.*

**BUILDING PERMITS & INSPECTIONS**

Call SAFEbuilt at 952-442-7520  
[www.lilydale.govoffice.com](http://www.lilydale.govoffice.com)



**Candidate Filing for City Offices**

The candidate filing period starts on July 30 and ends at 5:00 p.m. on August 13. The offices to be elected at the November 5, 2024 General Election are:

- |                  |                                     |
|------------------|-------------------------------------|
| Mayor            | 2 year term, beginning January 2025 |
| 2 Councilmembers | 4 year term, beginning January 2025 |

If you are interested in running for a city office, stop by city hall to file an Affidavit of Candidacy. The filing fee is \$5.00. City hall is open Monday through Friday 9:00 a.m. to 4:30 p.m.

Candidate qualifications:

- Must be eligible to vote in Minnesota
- Must have not filed for the same or any other office at the upcoming primary or general election
- Must be 21 years of age or more upon assuming office
- Must have maintained residence in Lilydale for at least 30 days before the general election

**2024 Voting Information**

Voters can cast their ballot by absentee, direct balloting, or in person on election day.

**Primary Election**

Absentee ballots can be requested on-line at [mnvotes.org](http://mnvotes.org) or in-person at a Dakota County location listed below. Absentee voting began June 28. Completed absentee ballots must arrive to Dakota County Elections by election day in order to be counted.

Direct balloting (voters place their ballot directly into a ballot counter) begins July 26 at:

- Dakota County Northern Service Center in West St. Paul
- Dakota County Administration Center in Hastings
- Dakota County Western Service Center in Apple Valley

Vote at Lilydale city hall on Election Day, August 13, 7 a.m.—8 p.m.

**General Election**

Absentee voting begins September 20.

Direct balloting will start October 18, with a process and locations similar to direct balloting for the primary election.

Vote at Lilydale City Hall on Election Day, November 5, 7 a.m.—8 p.m.

**Absentee and direct balloting are not available at Lilydale city hall.**

View your sample ballot, register to vote or check your registration, and apply for an absentee ballot at [www.mnvotes.org](http://www.mnvotes.org).

# Recycle right

Recycling saves energy and protects natural resources. Recycling also supports important businesses across the country, and some that operate right here in Minnesota.

Help support the recycling industry by recycling right. Put these recyclables loose in your home recycling cart or use a paper bag. Do not use plastic bags. Make sure bottles, jars and containers are empty and dry before recycling. They don't have to be perfect — just free of most residue like food and liquids. Leave caps on containers and flatten boxes.



## Paper

- Newspaper and inserts
- Magazines and catalogs
- Mail and office papers

## Cardboard

- Corrugated cardboard
- Paperboard (e.g., cracker boxes)

## Cartons

- Milk and juice cartons
- Soup, broth and wine cartons
- Juice boxes

## Metal cans

- Aluminum, tin and steel cans

## Glass bottles and jars

## Plastic bottles, containers and jugs

- Containers numbered 1, 2 or 5
- Soda, juice and water bottles
- Milk and juice jugs
- Margarine, cottage cheese, and other tubs and lids
- Laundry detergent bottles and jugs
- Clear berry and produce containers



Leave out plastic bags, batteries, black plastic, food and things that can tangle around moving machines. If you're wondering about a specific item, use the online Recycling Guide at [www.dakotacounty.us](http://www.dakotacounty.us), search *recycling guide*.

*Partially funded by Dakota County and the Minnesota Pollution Control Agency.*

## Stay organized with The Recycling Zone

The Recycling Zone in Eagan is a destination for the stuff that doesn't belong in your home curbside cart. With the drive-thru setup, you stay in your car while staff unload materials from the trunk or backseat. Put smaller items in a box that you can leave behind.

### Accepted items – free drop-off unless noted

- Auto products like motor oil, antifreeze and gas
- Bug killers/repellants
- Cardboard (no larger than 36 inches by 36 inches)
- Cleaners
- Electronics (fee for TVs and computer monitors)
- Lightbulbs — all types
- Needles and sharps (in a closed rigid container, keep in front seat)
- Paints and stains
- Personal care products like nail polish and hair dye
- Propane tanks and aerosol sprays
- Scrap metal
- Small household electronics like toasters and vacuums
- String lights and cords
- Tires (fee)
- Vaping devices
- Weed killer
- Most products that say caution, warning, danger or poison



If you have an unknown or unique household chemical email [recyclingzone@co.dakota.mn.us](mailto:recyclingzone@co.dakota.mn.us) prior to dropping off to work with The Recycling Zone staff about safe handling.

### The Recycling Zone does not accept

- Appliances
- Carpet
- Furniture
- Humidifiers and dehumidifiers
- Lumber
- Mattresses
- Medical waste and medications
- Yard waste

The Recycling Zone, located at 3365 Dodd Road in Eagan, is open all year, four days a week. For a complete list of accepted items and drop-off hours, visit [www.dakotacounty.us](http://www.dakotacounty.us), search *recycling zone*.

*Partially funded by Dakota County and the Minnesota Pollution Control Agency.*

## Illicit Discharge—What it is and what you can do to help.

Illicit discharge is the disposal or discharge of pollutants and non-storm water materials into a storm sewer system via surface flow, direct dumping into the storm sewer or water body, or through illegal connections to the storm sewer system.

Storm drains and ditches are only designed to convey stormwater runoff, and there is no treatment facility between the street and the end destination—a lake, stream or wetland.

If you see spills or illegal dumping, we want to hear about it. If there is an immediate threat to human health or safety, call 911. For non-emergencies during regular business hours, call Lilydale city hall at 651-457-2316 or email [cityoflilydale@comcast.net](mailto:cityoflilydale@comcast.net).

### Types of illicit discharges

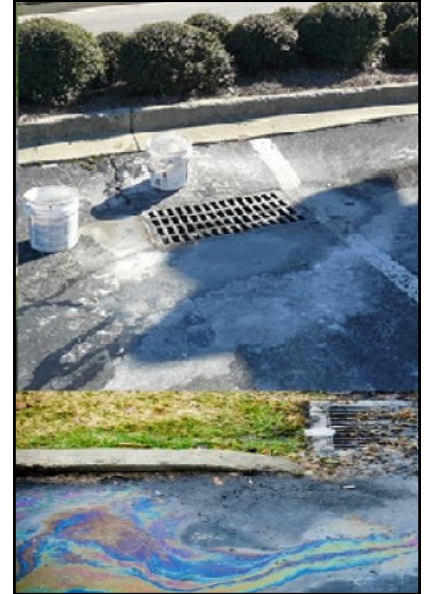
- Improper disposal of auto and household chemicals
- Spills from roadway accidents or vehicle leaks
- Improper disposal of yard and pet wastes
- Construction site sediment
- Drilling operation waste
- Laundry and car wash water
- Septic tank discharge and sanitary wastewater
- Chlorinated pool water

### What to look for

- Persons dumping liquids, animal waste, leaves, grass clippings, or anything unidentifiable into a storm drain
- Unusual colors or odors in the surface water
- Stains, unusual odors, or structural damage to street surfaces
- Dead or distressed fish, plants, or other wildlife near surface water
- Abnormal vegetative growth in water bodies
- Sediment accumulation in water bodies
- Pipes with flowing water during a dry period

### Acceptable discharges

- Clean water discharges including water line flushing
- Air conditioning condensation
- Irrigation water, sump pump and lawn watering discharge
- Individual residential car wash water
- De-chlorinated swimming pool water
- Discharges or flow from firefighting and other activities necessary to protect public health and safety.
- Normal rainfall



Dog poop carries harmful bacteria. Pick up after your pet.



Please recycle this  
newsletter after use.